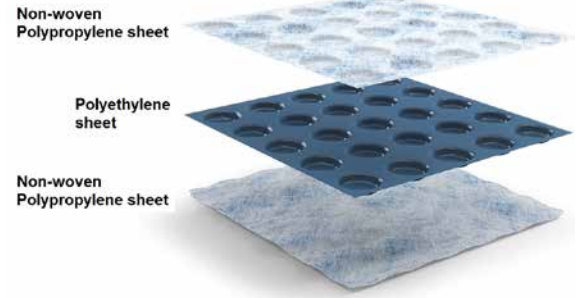


PRODESO



DESCRIPTION

PRODESO is a low density polyethylene membrane provided with rounded based truncated pyramidal cavities. On the under side it is provided with a non-woven thermowelded polypropylene sheet that guarantees fixing to the support and on the upper side with non-woven thermowelded polypropylene that perfectly adheres to its surface and guarantees tile attachment

PRODESO is an uncoupling and waterproofing membrane, with a 3,5 mm. thickness that does not require expansion joints in the screed before laying ceramic and natural stone tiles.

PRODESO ensures laying of any flooring and waterproofing also in the case of cracked, not perfectly cured substrates and therefore with possible vapor pressure and overlapping.

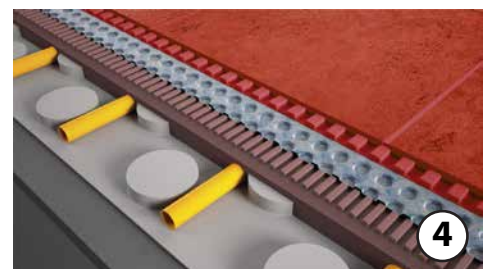
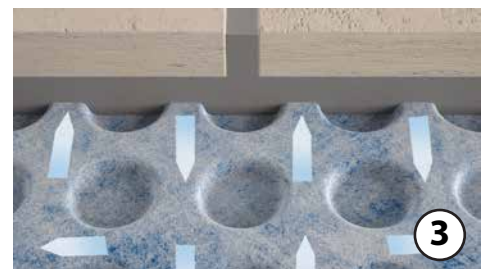
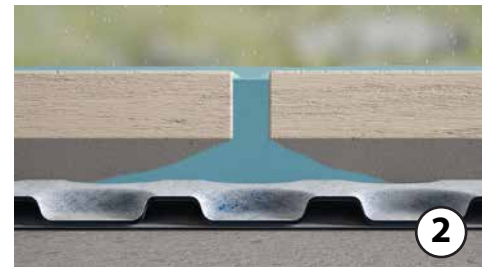
compounds, guarantees waterproofing of terraces, balconies and indoor environments that may come in contact with water such as bathrooms, saunas and kitchens.

3 - Vapour management

The cavities that are created below the truncated pyramidal cavities of **PRODESO** guarantee the vapour management generated by the evaporation of the residual water into the substrate. For this reason it is possible to install **PRODESO** even on substrates not perfectly cured.

4 - Heat distribution

The cavities that are created below the truncated pyramidal cavities of **PRODESO** ensures, in the case of floor heating, especially when the screed has low thickness, a more uniform heat distribution providing a major comfort.



PRODUCT PLUS AND FUNCTIONS

1 - Uncoupling

PRODESO neutralizes the differential movement that arise between support and flooring preventing breakage; therefore it is possible to lay tiles also on problematic supports such as wood and cracked substrates.

2 - Waterproofing

PRODESO, when used with **PROBAND 150**, a waterproofing polyethylene tape covered on both sides with a non-woven sheets in polypropylene and **PROBAND KOLL**, an hydrophobic mono component adhesive with very low emissions of volatile organic



PRODESO

AREAS OF USE

Use

Uncoupling and waterproofing membrane for cracked and not perfectly cured screed also before laying ceramic and natural stone. It can be laid over cement based screed, sound ceramic and natural stone floorings, not perfectly cured concrete and wood substrates.

Very resistant to saline solutions, acids and alkalis, alcohol and oils. In case of particular products, contact our technical department.

Do not use

On bituminous coverings, to waterproof walkable surfaces and lightweight screeds.

WARNINGS

Lay the tiles immediately after applying **PRODESO** to avoid exposure to sunlight. Protect the membrane, during laying, from mechanical stresses using walking boards. Do not use on substrates subject to continuous rising moisture. For information not explained in the technical details, please contact our technical department.

LAYING INSTRUCTIONS

5. Cut **PRODESO** to the desired length and with a notched trowel apply a C2 adhesive that develops full membrane back coverage on the substrate. The adhesive must be suitable to the substrate.

6. Press **PRODESO** over the wet adhesive and press the membrane using a plastic trowel.

7. Check the coverage of **PRODESO**. In case of partial coverage, increase the quantity of adhesive.

8. Lay the next sheet of **PRODESO** taking care to align it with the previous one, without overlapping.

9. Apply **PROBAND KOLL**, an hydrophobic mono component adhesive with very low permeability, along the joints between two adjacent sheets with the flat side of the notched trowel, to a width of about 20 cm, taking care to fill the cavities of the membrane and leaving a thin layer of adhesive on top

of the reliefs.

10. Fix **PROBAND 150** to **PROBAND KOLL** following the joint. Apply strong pressure and smooth **PROBAND 150** to ensure sealing, avoiding the formation of folds.

11. Apply **PROBAND KOLL**, an hydrophobic mono component adhesive with very low permeability, to the floor, with the flat side of the notched trowel, to a width of about 10 cm., taking care to fill the cavities of the membrane and leaving a thin layer of adhesive on top of the reliefs. Apply the adhesive to the wall with a 4 x 4 mm. notched trowel.

12. Fix **PROBAND 150** to **PROBAND KOLL** following the joint. Apply strong pressure and smooth **PROBAND 150** to ensure sealing, avoiding the formation of folds.

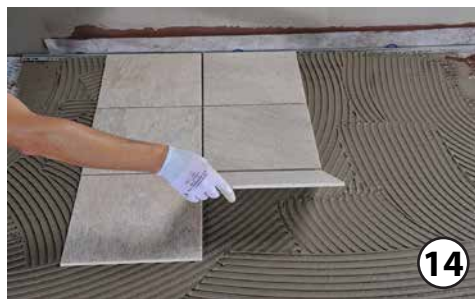
Warning: To prevent damages to the membrane, we suggest to protect it when laying from mechanical stresses, using walking boards, . It is also necessary to protect it from direct sunlight. During rain, it is necessary to protect the membrane for the first 24 hours after laying and remove water from the cavities before laying the tiles.

SPECIAL NOTES

In case of bituminous coverings, use butyle band adhesive **PROBAND BU** before laying **PROBAND 150**.



PRODESO



After the laying of **PRODESO**, the floor can be laid immediately.

13. Apply a C2 adhesive on the membrane with the flat side of the notched trowel taking care to fill the rounded based truncated pyramidal cavities.

14. Apply a C2 adhesive on the membrane with a notched trowel and lay the tiles.

TEXT TEMPLATE FOR TENDERS

Delivery and installation of low density polyethylene membrane provided with round based truncated pyramidal cavities. On the under side it is provided with a non-woven thermowelded polypropylene sheet that ensures fixing to the support and on the upper side with a non-woven thermowelded polypropylene sheet, that perfectly adheres to its surface and guarantees tile attachment, like PRODESO of the Progress Profiles company.

PDES : Polyethylene membrane with thermo-welded polypropylene sheet on both sides.

Roll length : _____ mt
 Roll width : _____ mt
 Material : _____ €/mt
 Application : _____ €/mt
 Total value : _____ €/mt

TECHNICAL DATA

Appearance	Polymeric membrane	
Colour	White / Cyan blue	
Shelf life	24 Months in dry environment avoiding direct sunlight and heat sources	
Total thickness	≈ 3 mm	EN 1849 - 2
Width	≈ 1 m	
Weight of PP sheet	≈ 160 g / m ²	EN 1849 - 2
Weight of LDPE sheet	≈ 400 g / m ²	EN 1849 - 2
Cavities number	≈ 2500 m ²	

PERFORMANCE HIGT – TECH

Longitudinal breaking load	≈ 490 N / 50 mm	EN 12311-1
Transversal breaking load	≈ 370 N / 50 mm	EN 12311-1
Longitudinal ultimate elongation	≈ 60 %	EN 12311-1
Transversal ultimate elongation	≈ 64 %	EN 12311-1
Channel volume	≈ 1,02 lt / m ²	
Crack – Bridgin Ability	≥ 1 mm	
Working temperature	- 40° C / +80° C	